



My Little Fisherman Table

INSTRUCTION MANUAL

No. 3036
Ages: 1½-4y

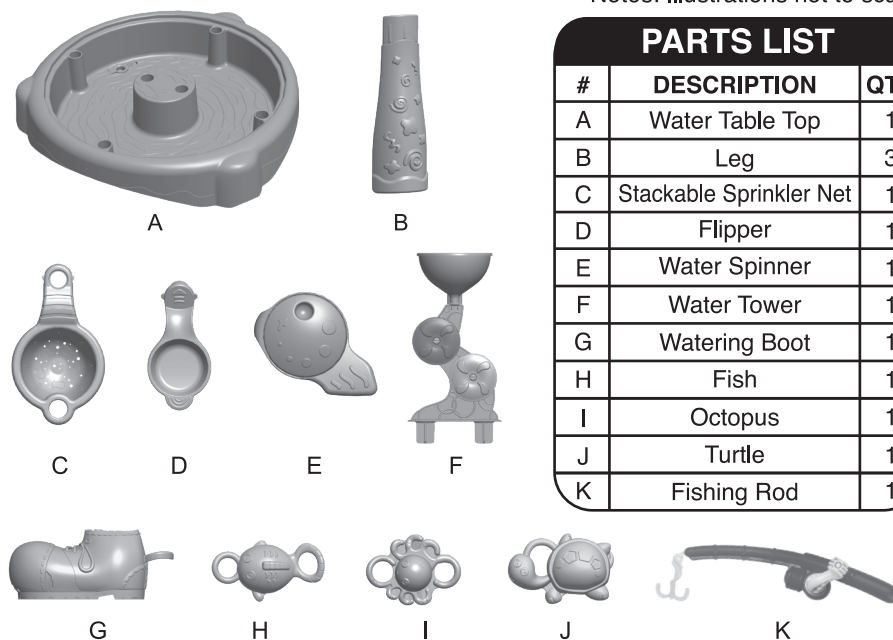


DO NOT DISCARD: IMPORTANT LITERATURE. KEEP THESE INSTRUCTIONS FOR FUTURE REFERENCE. OBSERVE ALL SAFETY WARNINGS AND CAUTIONARY STATEMENTS TO REDUCE THE RISK OF SERIOUS OR FATAL INJURY.

SAFETY INSTRUCTIONS

- Warning. Only for domestic use. Suitable for indoor and outdoor use. This product is designed for normal residential use only, and is not intended for use in schools, parks, day care centers, nurseries, or other public places.
- On-site adult supervision is required for children of all ages at all times when on or around this product. Never leave children unattended.
- This item should be used on flat areas only.
- Adult assembly required. No tools required.
- DO NOT allow children to sit, stand or climb on the top surface. Failure to do so may cause the product to become unstable.
- Maximum loading: 8.5 kg (18.5 lbs) of water.

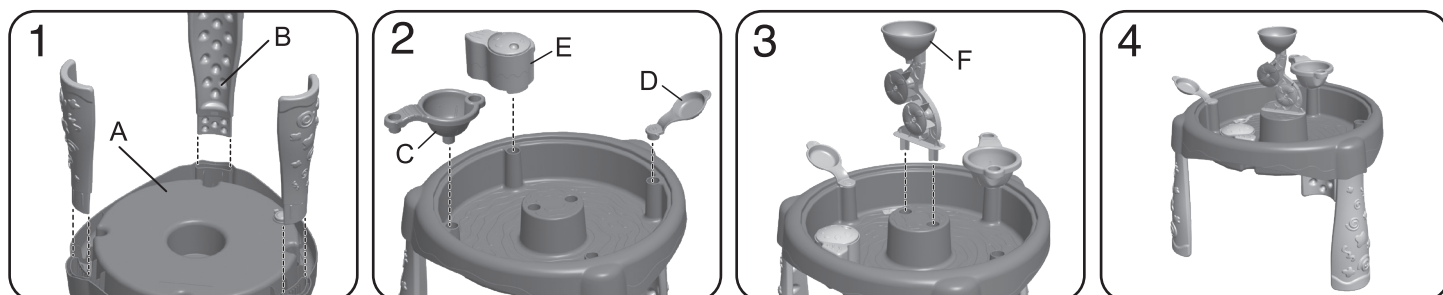
PARTS



Notes: Illustrations not to scale.

PARTS LIST

#	DESCRIPTION	QTY
A	Water Table Top	1
B	Leg	3
C	Stackable Sprinkler Net	1
D	Flipper	1
E	Water Spinner	1
F	Water Tower	1
G	Watering Boot	1
H	Fish	1
I	Octopus	1
J	Turtle	1
K	Fishing Rod	1



CARE AND MAINTENANCE

- Make sure all parts are securely snapped together before use.
- The owner of this product shall be responsible for maintaining the legibility of the warning labels.
- DO NOT leave this item exposed to strong wind and inclement weather.
- Clean the table regularly with soapy water in order to avoid a build up of static electricity.
- Discard all packaging properly after unit has been assembled.
- Twice a month during play season; check the unit for tightness, and tighten as required. It is particularly important that this procedure be followed at the beginning of each season and monthly thereafter for evidence of deterioration. Replace as needed. If not checked regularly, parts can be loose or missed and components can become detached and cause injuries.
- At the end of each play season or when temperature falls below 32°F / 0°C; remove the product and store indoors. In extreme cold weather, plastic materials lose resilience and may become brittle and crack upon impact.

LIMITED WARRANTY

Our products are covered under warranty for a period of 1 year from the date of purchase, under normal use and service, against defective workmanship and material. If you have recently purchased this product and find it to be defective in anyway, kindly return it to the "Source of Purchase" for a Full Refund or Exchange.

Should the product no longer be covered by your Purchase Receipt, or should you have any questions pertaining to our product, please call our Toll Free Customer Service for assistance.

Keep a copy of the UPC Code with proof of purchase receipt for any future Warranty Service.

Please retain packaging and assembly instructions for future reference.

CUSTOMER SERVICE / ENQUIRIES



US/Canada toll free hotline:
1-888-468-9898
service@grow-n-up.com
Other countries:
support@grow-n-up.com
www.grow-n-up.com

©2019 Grow'n up Limited.
All Rights Reserved.
Room 808B New Mandarin Plaza,
Tsim Sha Tsui, Kowloon, Hong Kong.
MADE IN CHINA (SZ)