



# Smartoddie™ 2-in-1 Slide to Basketball

No. 2035  
Ages: 1½ - 4y

## INSTRUCTION MANUAL

**DO NOT DISCARD: IMPORTANT LITERATURE. KEEP THESE INSTRUCTIONS FOR FUTURE REFERENCE. OBSERVE ALL SAFETY WARNINGS AND CAUTIONARY STATEMENTS TO REDUCE THE RISK OF SERIOUS OR FATAL INJURY.**

**⚠ WARNING:** TO AVOID SERIOUS INJURY: DO NOT install this product on a hard surface. A fall onto hard surface could result in a head or other serious injuries. Never place on concrete, asphalt, wood, packed earth or other hard surfaces. Carpet over hard floors may not prevent injury.

## SAFETY INSTRUCTIONS

**CHOKING HAZARD** - Small parts. This product contains small parts and sharp points which are necessary for assembly. Prior to or during assembly of this product, keep all components out of children's reach. Small parts pose a choking hazard to children under 3 years of age.

- Warning. Only for indoor and outdoor domestic use. This product is designed for normal residential use only, and is not intended for use in schools, parks, day care centers, nurseries, or other public places.
- Warning. This product is intended for use by children ages 1½ - 4 years.
- Warning. Maximum weight limit: 50 lbs (23 kg) on each individual play. Limit 1 child at any one time.
- Adult assembly required. Phillips / cross-headed screwdriver (not included) required during assembly.
- Instruct children not to use product until properly assembled.
- Recommend to place the activity toy on a level surface at least 2 m (6.5 feet) from any structure or obstruction such as a fence, garage, house, overhanging branches, laundry lines or electrical wires.
- On-site adult supervision is required for children of all ages at all times when on or around this product. Never leave children unattended.
- Slide feet first. One (1) child at a time.
- When the slide is exposed to direct sunlight, check the temperature on the product surface. If the slide chute is too hot, pour cold water on the slide chute until it cools and wipe dry before giving it to children.
- Use only the balls provided with this unit.
- Do not over inflate the balls. The balls can burst causing serious injury.
- It is recommended that the slide be placed in a position unlikely to injure child's eyes with respect to sun.

**⚠ CAUTION:** Observing the following statements and warnings to reduce the likelihood of serious or fatal injury.

- DO NOT allow children to play on this product until it is completely installed.
- DO NOT allow children to stand, walk close to, behind, in front of, or between moving product. Instruct children to keep a safe distance away.
- DO NOT let children use this product in any manner other than intended.
- Dress children appropriately while on and around this product. Use well-fitting shoes that do not have slippery soles. DO NOT allow children to wear ponchos, scarves, hoods, jewelry, loose shoes, loose-fitting clothing, neckties, clothing with loose strings and/or clothing that might be potentially hazardous while using this product.
- Instruct children to remove their bike or other sports helmet before using this product.
- Make sure all parts are securely snapped together before use.

## CARE AND MAINTENANCE

- Check all coverings for bolts and sharp edges and replace when required.
- Replace defective parts in accordance with the manufacturer's instructions.
- Please check the unit twice monthly during the usage season for tightness, and tighten as required. It is particularly important that this procedure be followed at the beginning of each season and monthly thereafter for evidence of deterioration. Replace as needed. If not checked regularly, parts can be loose or missed and components can become detached and cause injuries.
- DO NOT allow children to climb or to play when the product is wet. It may be slippery when wet.
- DO NOT leave this item exposed to strong wind and inclement weather.
- Clean the slide regularly with soapy water in order to avoid a build up of static electricity.
- NEVER attach any materials that are not specifically designed for use with this product, such as (but not limited to) jump ropes, clotheslines, pet leashes, cables and chains, these pose a potential strangulation hazard.
- Discard all packaging properly after unit has been assembled.
- Disassemble and dispose of this product in a safe place and manner so as not to present any hazard to any individual at the item when the product is discarded.
- At the beginning of each play season; rake and check depth of loose fill protective surfacing materials to prevent compaction and to maintain appropriate depth. Replace as necessary.
- At the beginning of each play season; check metal parts for rust. If found, sand and repaint using a non-lead based paint meeting the requirements of 16 CFR 1303.
- At the end of each play season or when temperature falls below 32°F / 0°C; remove the product and store indoors. In extreme cold weather, plastic materials lose resilience and may become brittle and crack upon impact.
- At the end of each play season or when temperature falls below 32°F / 0°C; rake and check depth of loose fill protective surfacing materials to prevent compaction and to maintain appropriate depth. Replace as necessary.

# Consumer Information sheet for Playground surfacing materials

**Maximum fall height for this product is 1 ft 9 inch / 540 mm**

The US Consumer Product Safety Commission (CPSC) estimates that about 100 000 playground equipment-related injuries resulting from falls to the ground surface are treated annually in US hospital emergency rooms. Injuries involving this hazard pattern tend to be among the most serious of all playground injuries, and have the potential to be fatal, particularly when the injury is to the head. The surface under and around playground equipment can be a major factor in determining the injury-causing potential of a fall. It is self-evident that a fall on to a shock-absorbing surface is less likely to cause a serious injury than a fall onto a hard surface. Playground equipment should never be placed on hard surface, such as concrete or asphalt, and while grass may appear to be acceptable, it may quickly turn to hard-packed earth in areas of high traffic. Shredded bark mulch, wood chips, fine sand or fine gravel are considered to be acceptable shock absorbing surfaces when installed and maintained at a sufficient depth under and around playground equipment.

Table B. 1 lists the maximum height from which a child would not be expected to sustain a life-threatening head injury in a fall on to four different loose-fill surfacing materials if they are installed and maintained at depths of 150mm, 225mm and 300mm.

**Tab1 B.1 – Fall height in millimeters from which a life-threatening head injury would not be expected**

Type of Material	Depth of surfacing material		
	150mm	225mm	300mm
Double shredded bark mulch	1800	3000	3300
Wood chips	1800	2100	3600
Fine sand	1500	1500	2700
Fine gravel	1800	2100	3000

However, it should be recognized that all injuries due to fall cannot be prevented, no matter what surfacing material is used.

It is recommended that a shock absorbing material extend a minimum of 1800mm in all directions from the perimeter of stationary equipment such as climbing frames and slides. However, because children may deliberately jump from a moving swing, the shock absorbing material should extend in the front and rear of a swing a minimum distance of twice the height of the pivot point measured from a point directly beneath the pivot on the supporting structure.

This information is intended to assist in comparing the relative shock-absorbing properties of various materials. No particular material is recommended over another. However, each material is only effective when properly maintained. Materials should be checked periodically and replenished to maintain correct depth as determined necessary for the equipment in question. The choice of a material depends on the type and height of the playground, the availability of the material in a particular area, and its cost.

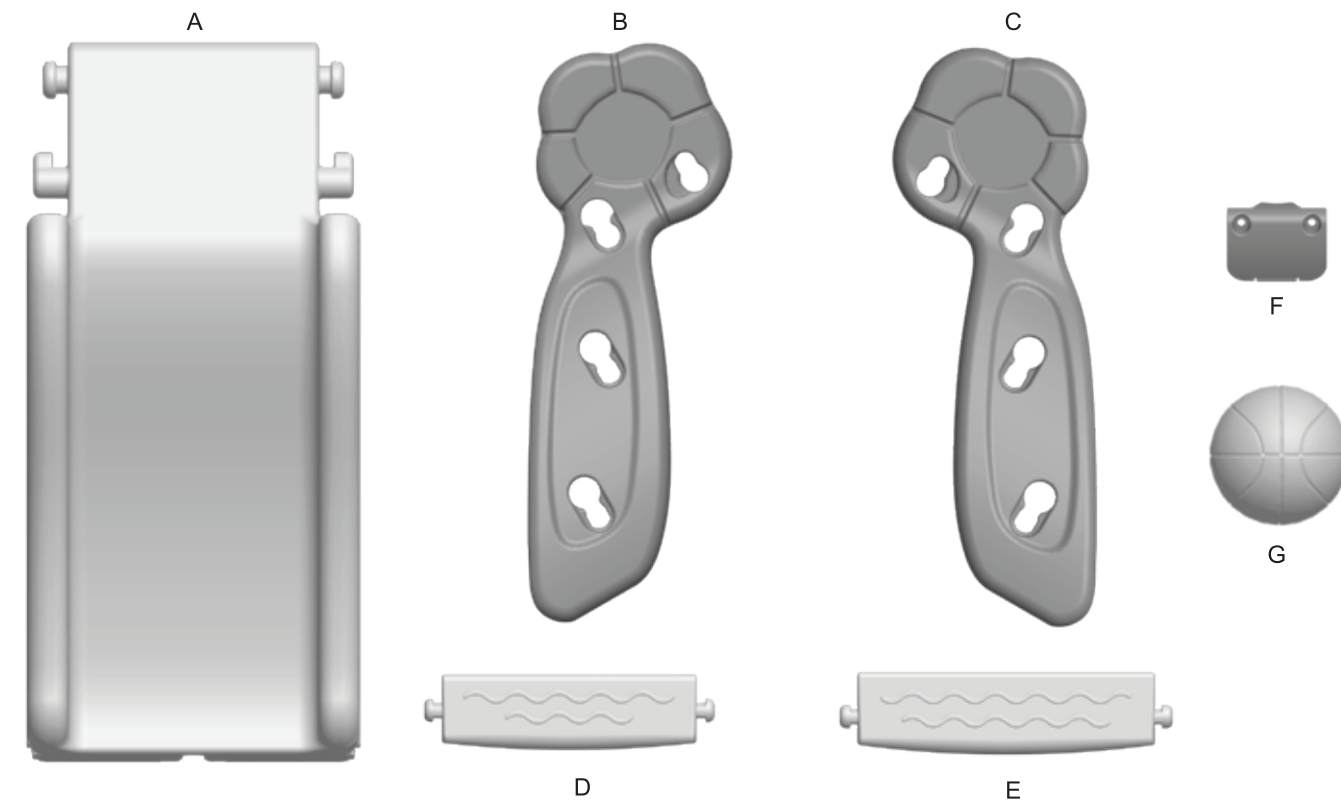
This information has been extracted from the CPSC publications ‘Playground Surfacing – Technical Information Guide’ and Handbook for Public Playground Safety’.

## FOR DISPOSAL

The owner of this product should disassemble and dispose of the playground equipment in such a way that no unreasonable hazards will exist at the time the playground equipment is discarded.

# PARTS

Notes: Illustrations not to scale.



I - Cap x 2



J - Screw - 0.53 inch / 13.5 mm x 2

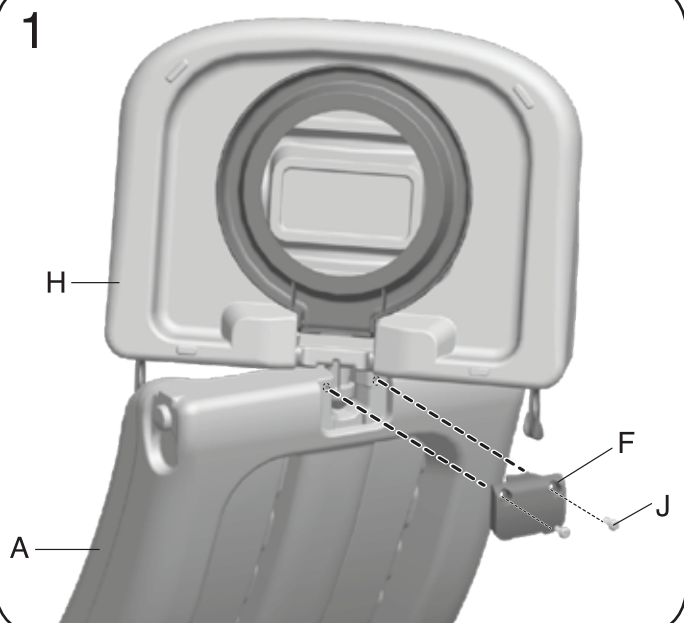
**FASTENER SHOWN ACTUAL SIZE**

## PARTS LIST

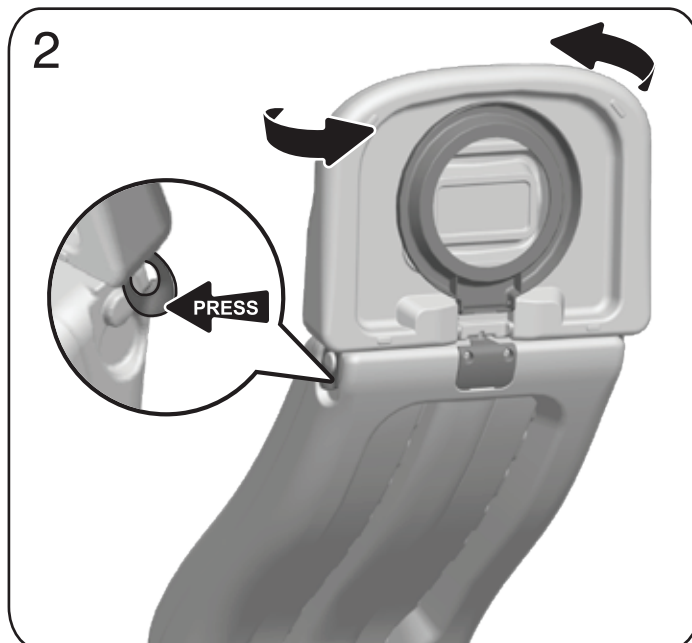
#	DESCRIPTION	QTY
A	Slide chute	1
B	Right side panel	1
C	Left side panel	1
D	Upper step	1
E	Lower step	1
F	Hinge cover	1
G	Basketball	1
H	Slide runout / Basketball board	1
I	Cap	2
J	Screw	2

## ASSEMBLY (SLIDE) :

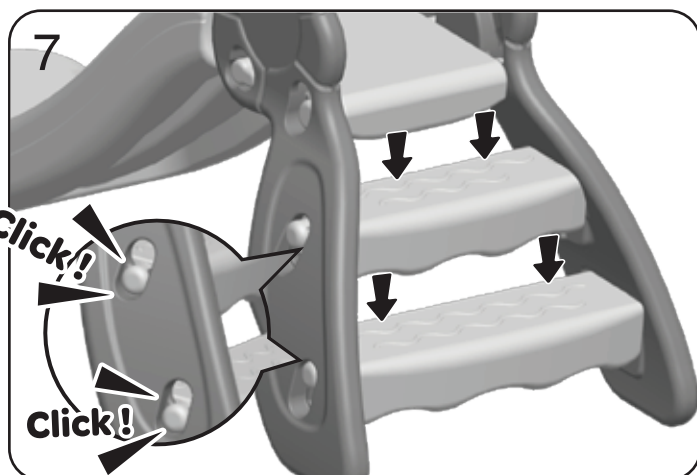
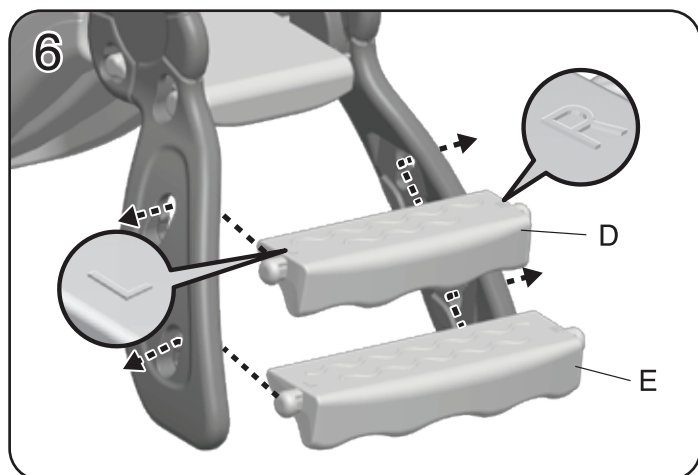
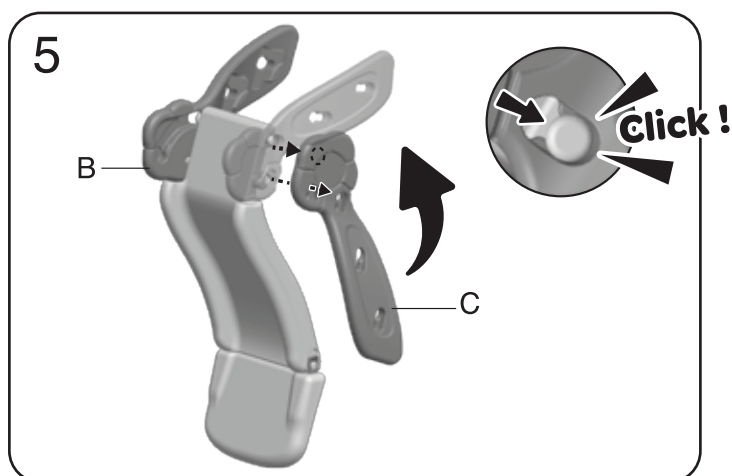
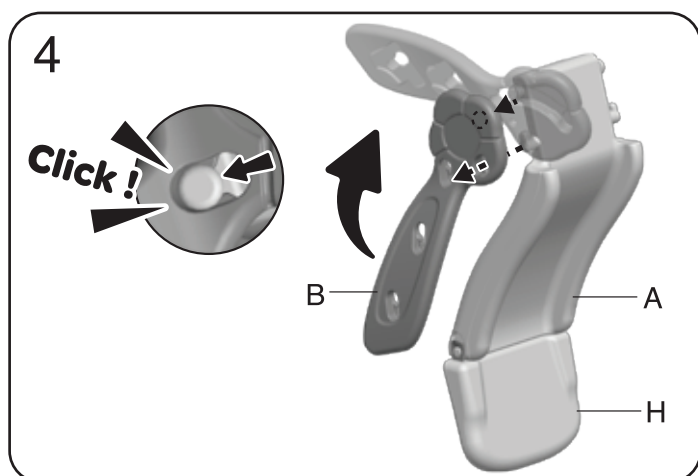
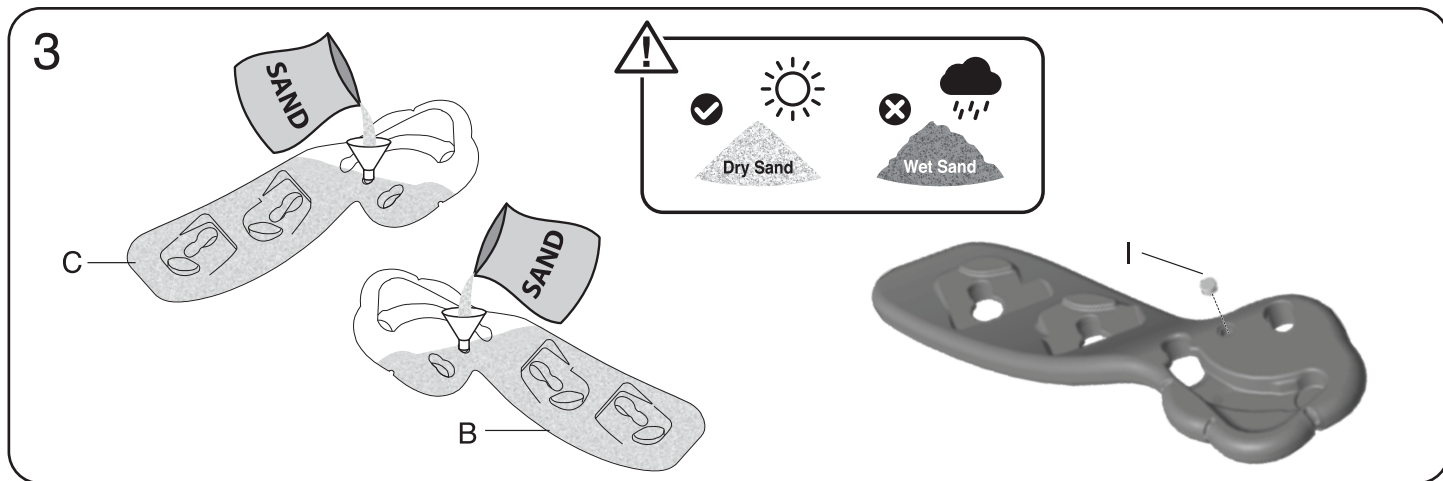
1



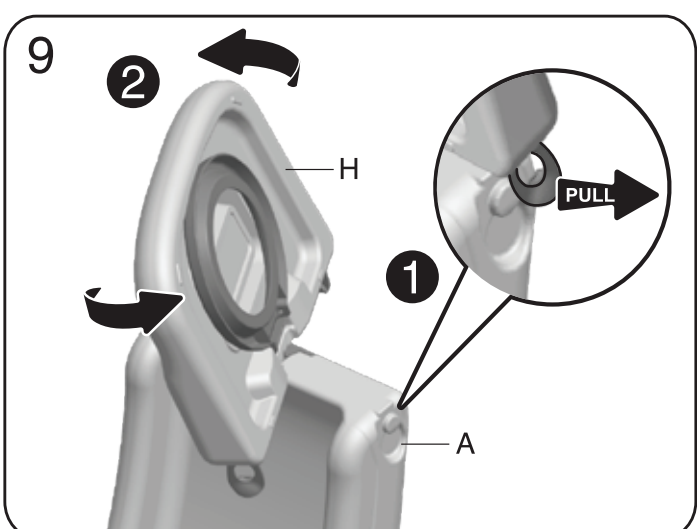
2



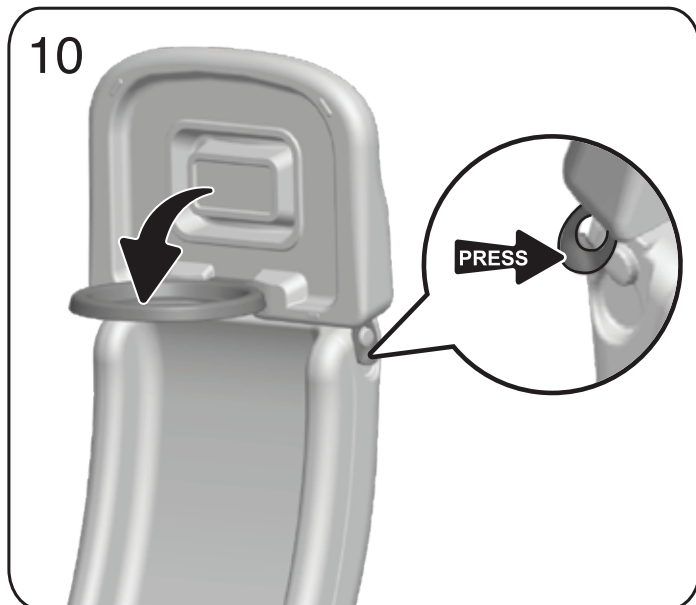
## SAND FILLING:



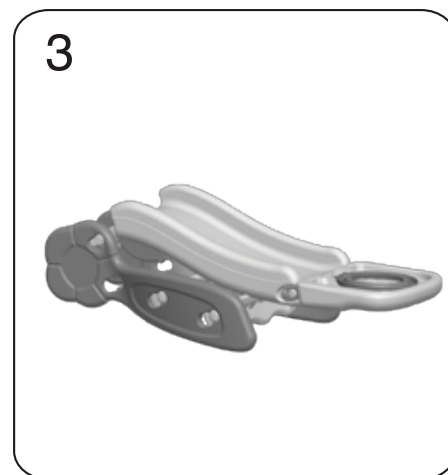
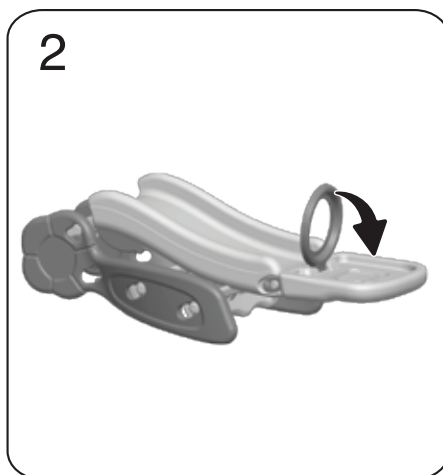
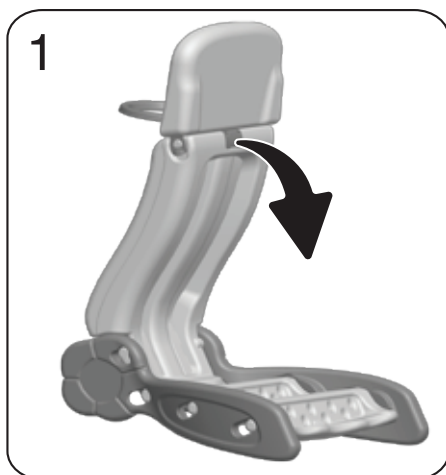
## ASSEMBLY (BASKETBALL STAND) :







#### FOR STORAGE:



#### BASKETBALL:

- Approximate Ideal Circumference: 12.5" (317mm)
- PUMP & PIN NOT INCLUDED.



#### NOTE

- Use a standard athletic inflating needle available at most sporting goods stores.
- Moisten needle to insert into plug.
- A bicycle pump is recommended to pump air into the balls.
- Inflate the balls to approximately 12.5" (317mm) circumference.
- Do not exceed recommended circumference or material damage can occur.

#### LIMITED WARRANTY

Our products are covered under warranty for a period of 1 year\* from the date of purchase, under normal use and service, against defective workmanship and material. If you have recently purchased this product and find it to be defective in anyway, kindly return it to the "Source of Purchase" for a Full Refund or Exchange.

Should the product no longer be covered by your Purchase Receipt, or should you have any inquiry pertaining to our product, please call our Toll Free Customer Service for assistance.

Keep a copy of the UPC Code with proof of purchase receipt for any future Warranty Service.

Please retain packaging and assembly instructions for future reference.

\*The warranty period is three (3) months for daycare or commercial purchasers.

**CUSTOMER SERVICE:**  
Toll free hotline: 1-888-468-9898  
service@grow-n-up.com  
www.grow-n-up.com

©2016 Grow'n up Limited.  
All Rights Reserved.  
Room 808B New Mandarin Plaza, Tsim Sha Tsui, Kowloon, Hong Kong.  
**MADE IN CHINA (SZ)**