



Mister Coupe

INSTRUCTION MANUAL

DO NOT DISCARD: IMPORTANT LITERATURE. PLEASE READ AND FOLLOW INSTRUCTIONS CAREFULLY AND IDENTIFY ALL PARTS BEFORE ASSEMBLY.

⚠ WARNING: CHOKING HAZARD - Small parts. Adult assembly required. This product contains sharp points and small parts which are necessary for assembly. Prior to and during assembly of this product, keep small parts out of children's reach. Small parts pose a hazard to children under 3 years.

⚠ CAUTION:
Dispose of all packaging safely before giving this toy to a child. Packaging material contains small parts which could be swallowed. Keep away from children until assembled.

TO AVOID SERIOUS INJURY:

- Adult supervision required when item is in use.
- Adult assembly required. Phillips / cross-head screwdriver (not included) are required during assembly.
- This item must be used on level ground. DO NOT use near cars or other motor vehicles, near streets, steps, stairwells, sloped driveways, hills, roadways, alleys, swimming pools or other bodies of water such as pools, streams, rivers, lakes or oceans.
- Always wear shoes or sneakers to prevent injury when riding this toy.
- Please keep hands, feet, loose clothing and long hair away from the wheels when riding this toy.
- DO NOT allow children to use this product until it is completely assembled.
- DO NOT ride this toy in wet weather.
- DO NOT allow more than one rider.
- Maximum weight limit is 50 Lbs (23 kg).
- The toy should be used with caution since skill is required to avoid falls or collisions causing injury to the user or third parties.

CARE AND MAINTENANCE

- Before use, make sure that all the screws and pegs are securely tapped together. If plastics and screws are not assembled and tightened securely, could result in minor or moderate injury.
- Please carry out checks to the unit regularly for any worn out parts, tighten them if necessary. If broken or cracked parts are found, replace as necessary.
- To clean this product, use a slightly damp sponge or towel.
- DO NOT leave this product outside in the rain, Keep dry always.
- DO NOT leave this product exposed to direct sunlight. Prolonged exposure to direct intensive sunlight may cause the color fade.
- When temperature fall below 32°F/0°C, store this product indoors. Outdoor use of this product is not recommended. In extreme cold, plastic materials lose resilience and may become brittle and crack upon impact.

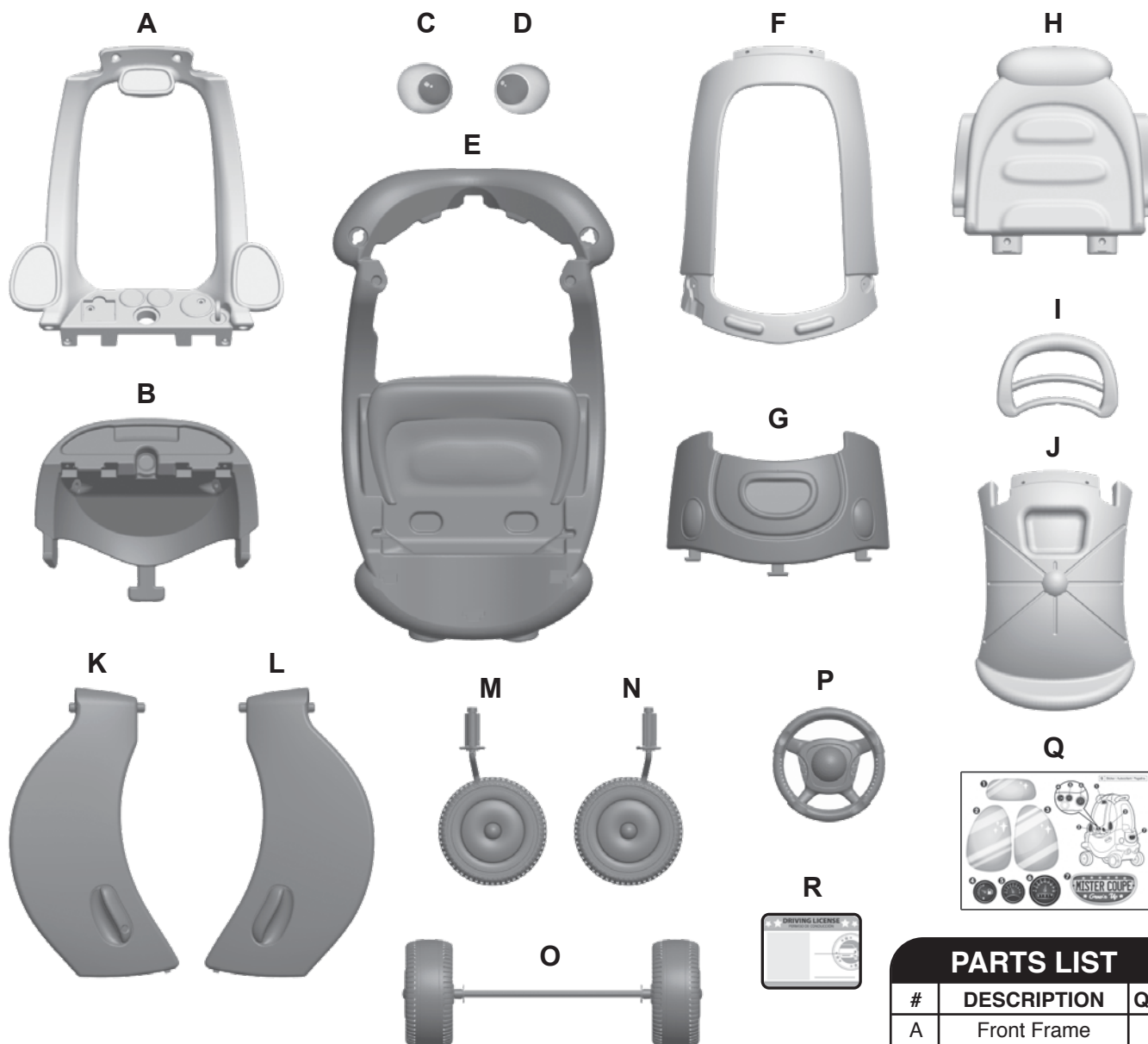
FOR DISPOSAL

The owner of this product should disassemble and dispose of the playground equipment in such a way that no unreasonable hazards will exist at the time the playground equipment is discarded.

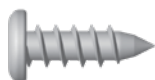


PARTS

Notes: Illustrations not to scale.



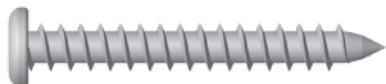
FASTENER SHOWN ACTUAL SIZE



S - Screw - 0.67 inch / 17mm x 4



T - Screw - 0.98 inch / 25mm x 9

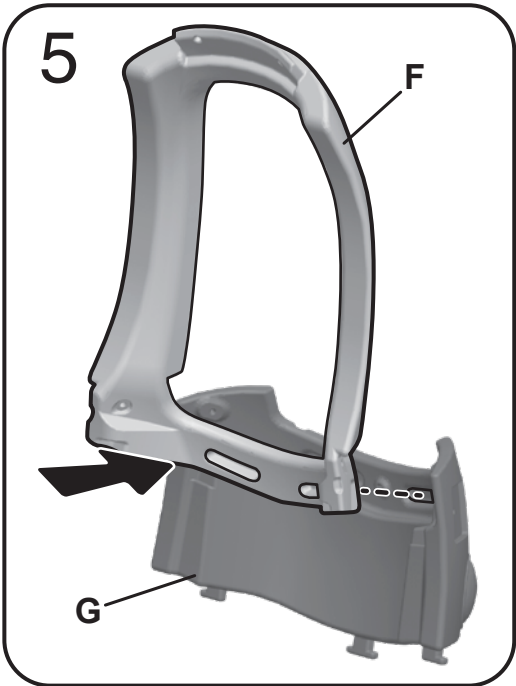
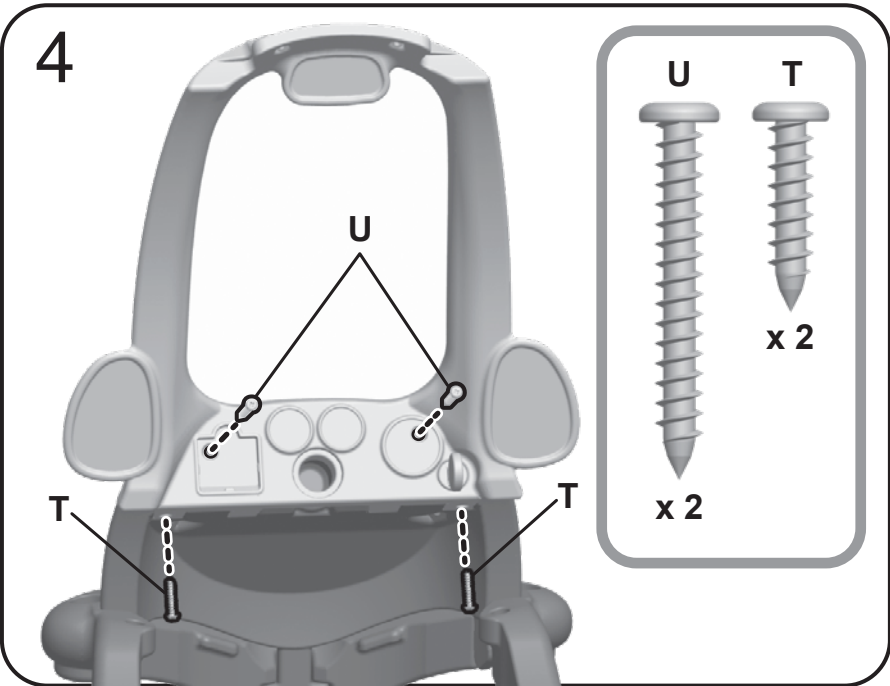
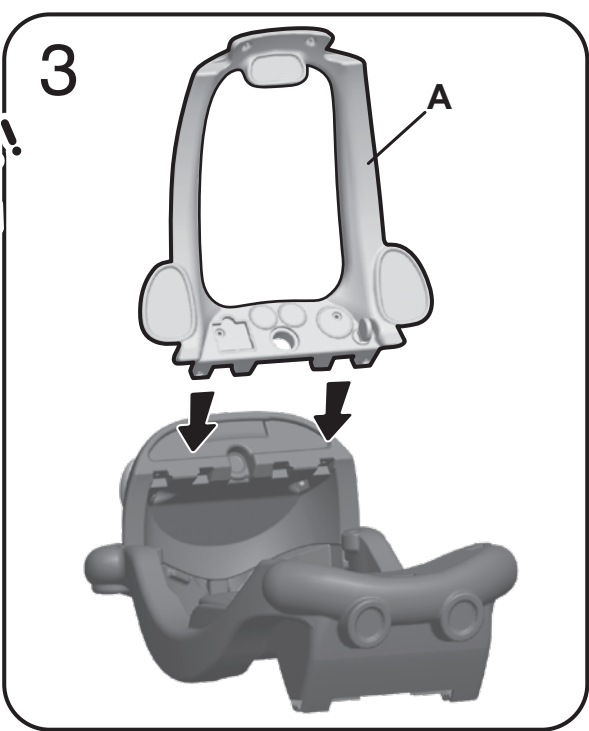
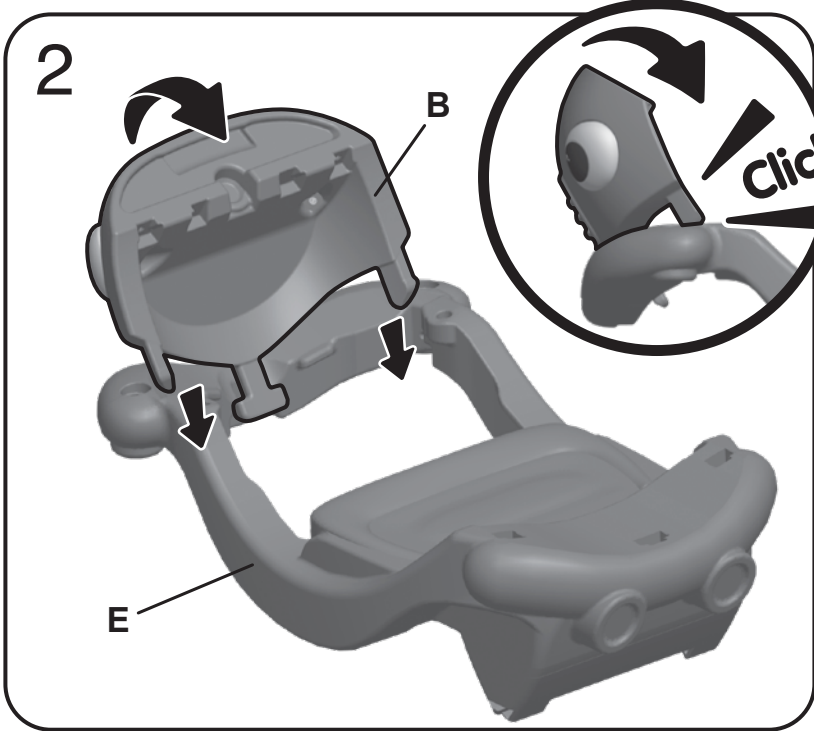
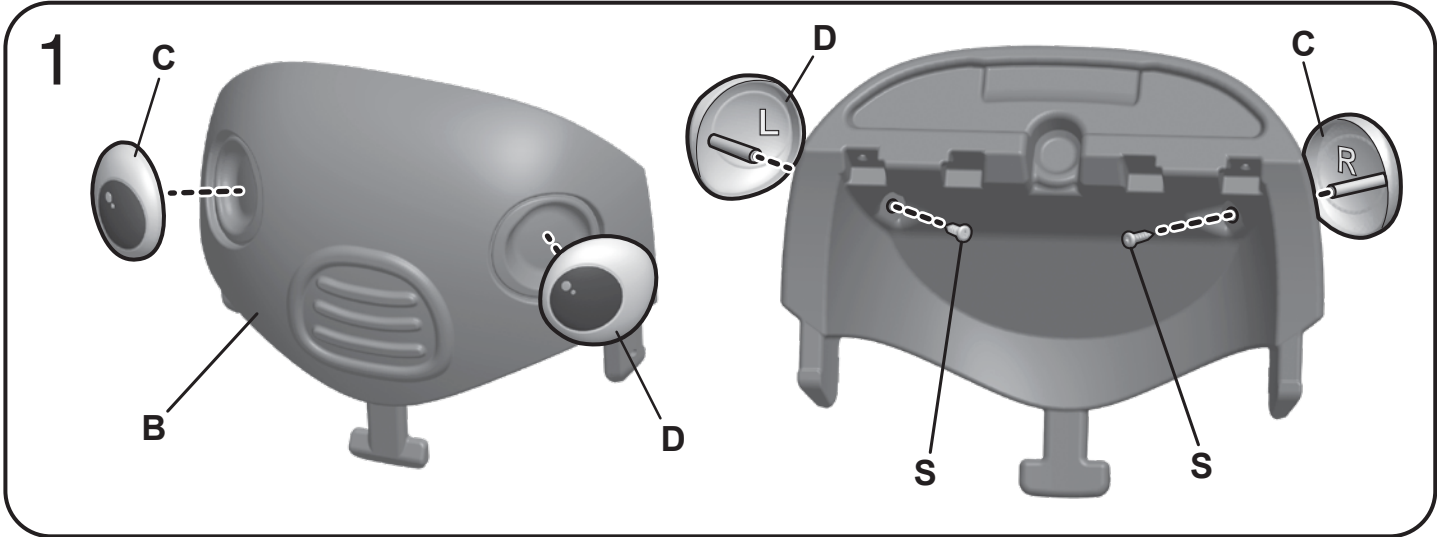


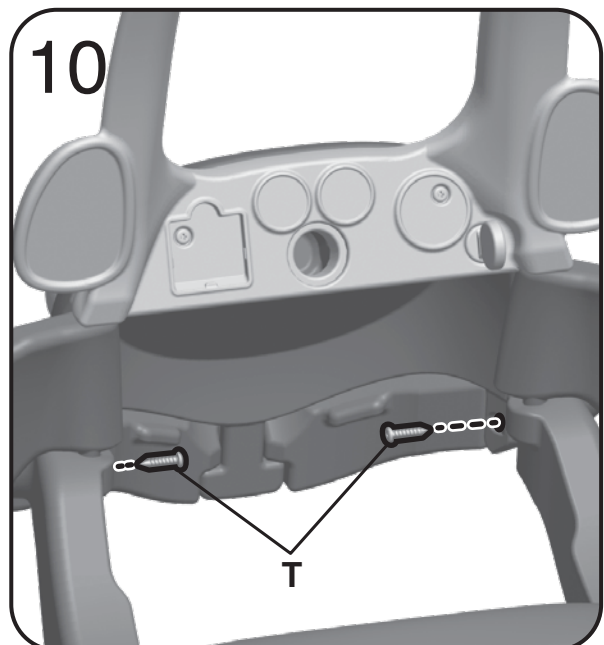
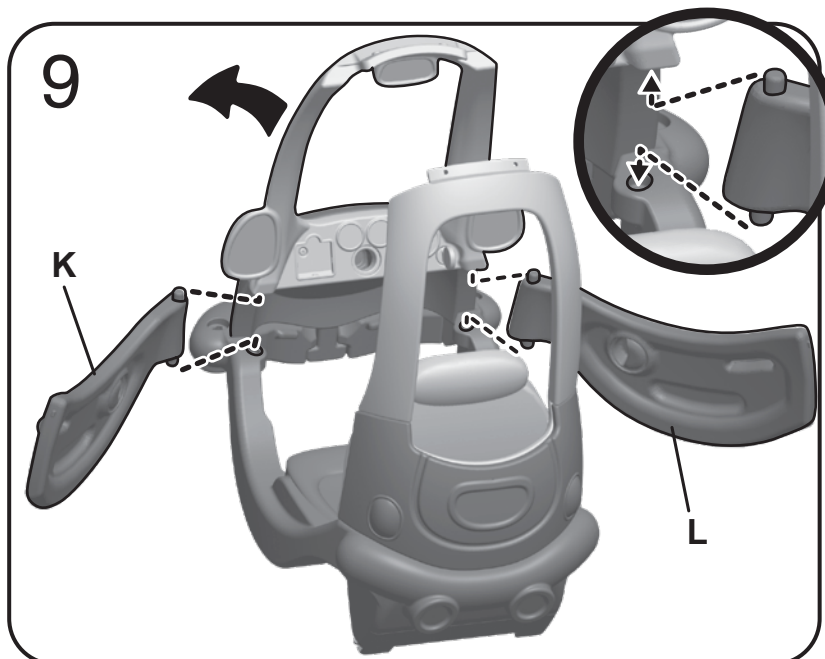
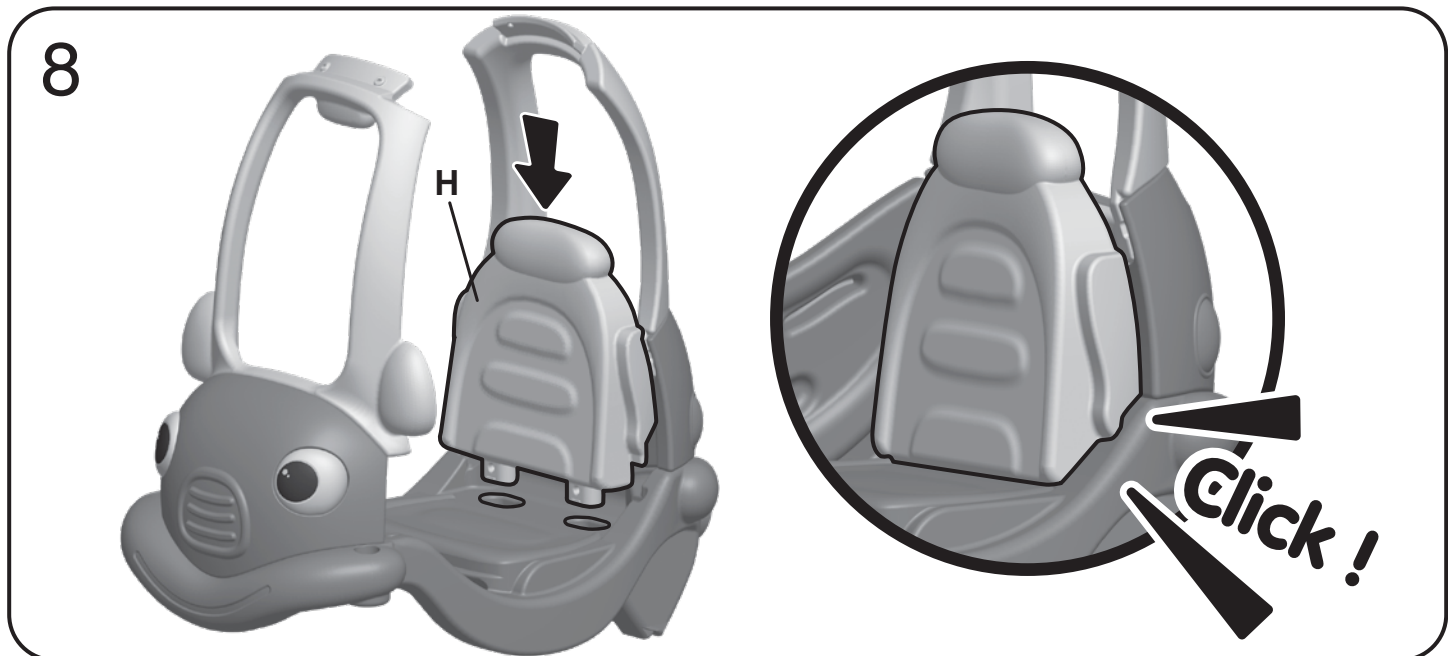
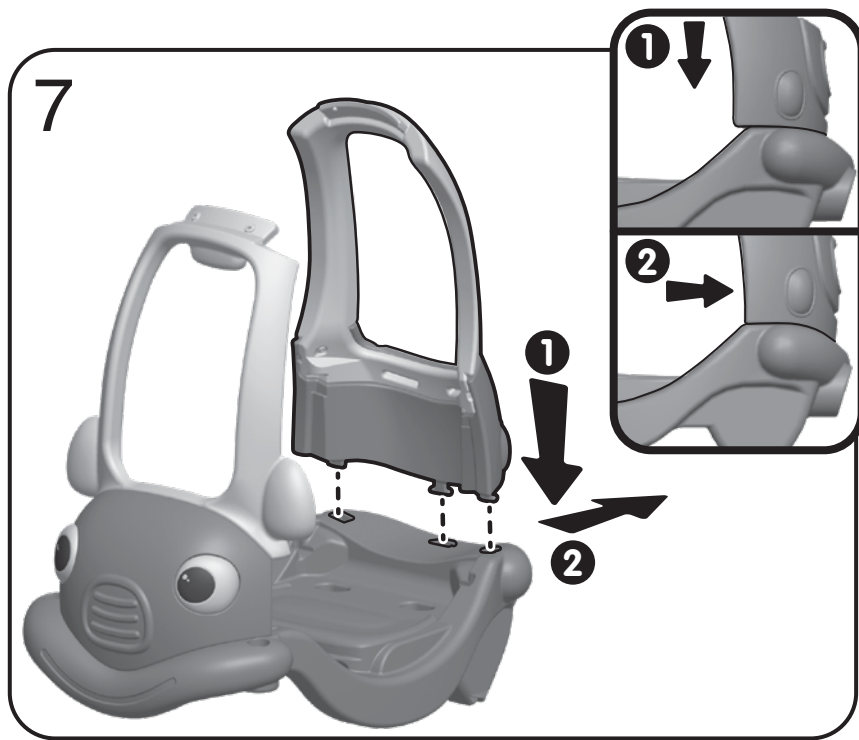
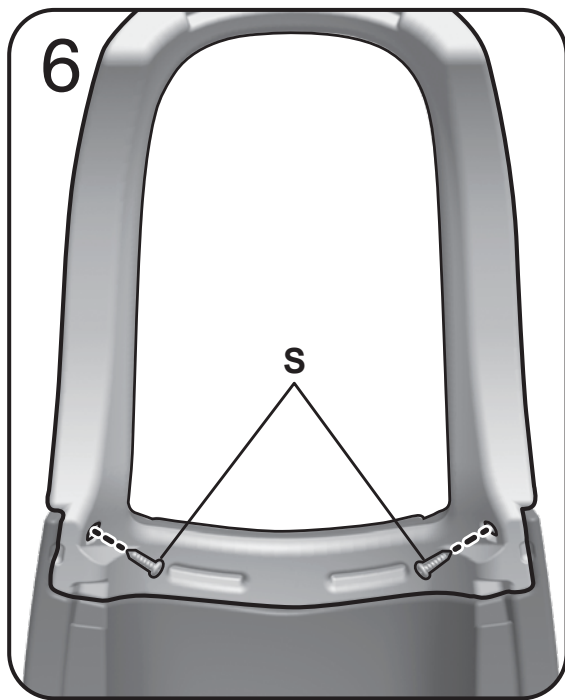
U - Screw - 1.85 inch / 47mm x 2

PARTS LIST

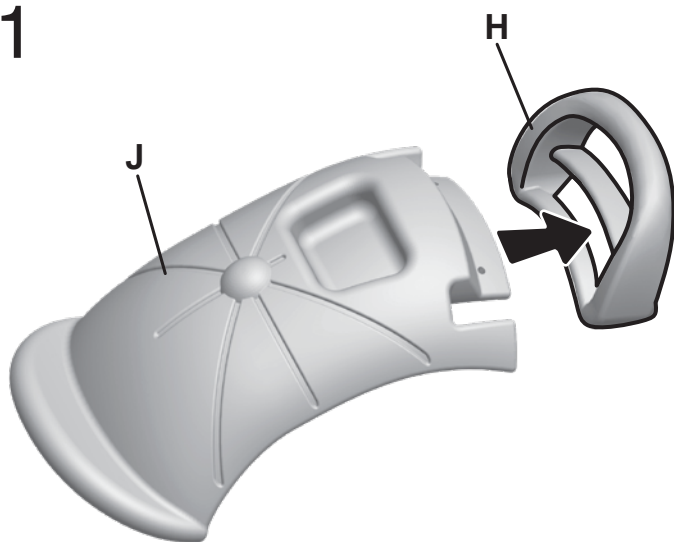
#	DESCRIPTION	QTY
A	Front Frame	1
B	Front Chassis	1
C	Right Eye	1
D	Left Eye	1
E	Chassis	1
F	Rear Frame	1
G	Rear Chassis	1
H	Seat Back	1
I	Handle	1
J	Roof	1
K	Left Door	1
L	Right Door	1
M	Left Front Wheel	1
N	Right Front Wheel	1
O	Rear Wheel Assembly	1
P	Steering Wheel	1
Q	Sticker	1
R	Driving License Card	1
S	17mm Screw	4
T	25mm Screw	9
U	47mm Screw	2

ASSEMBLY:

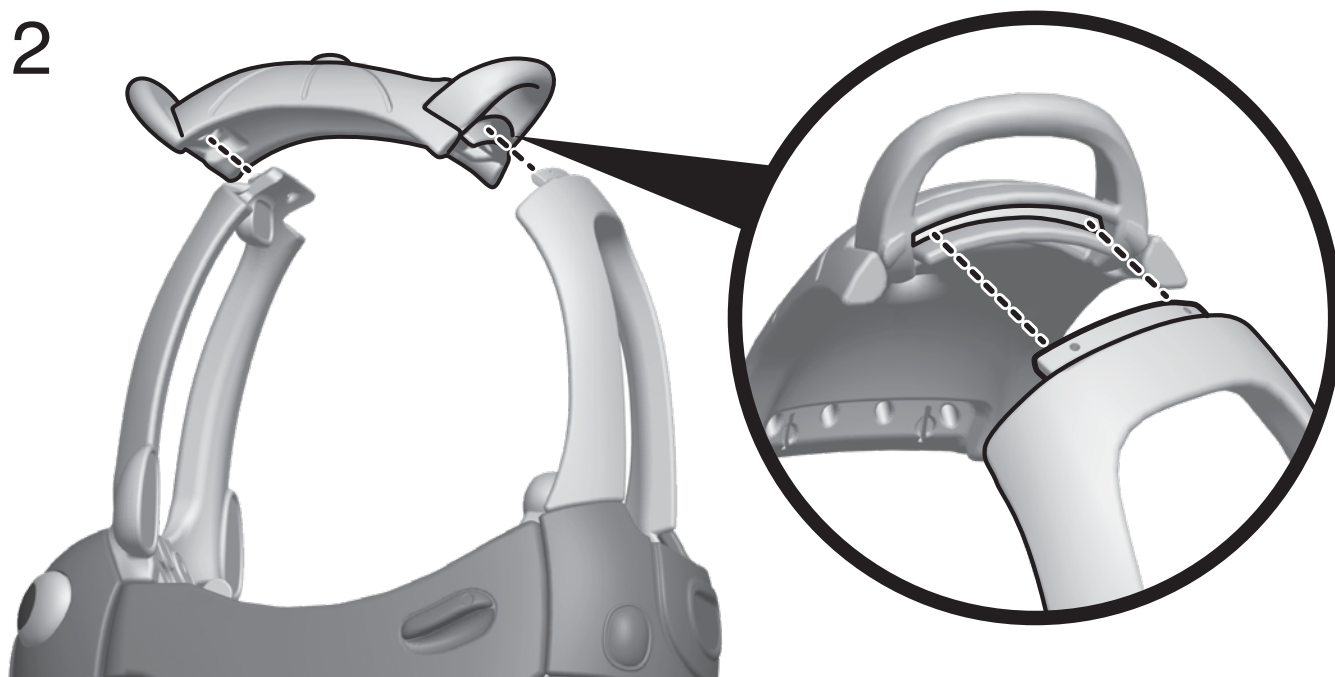




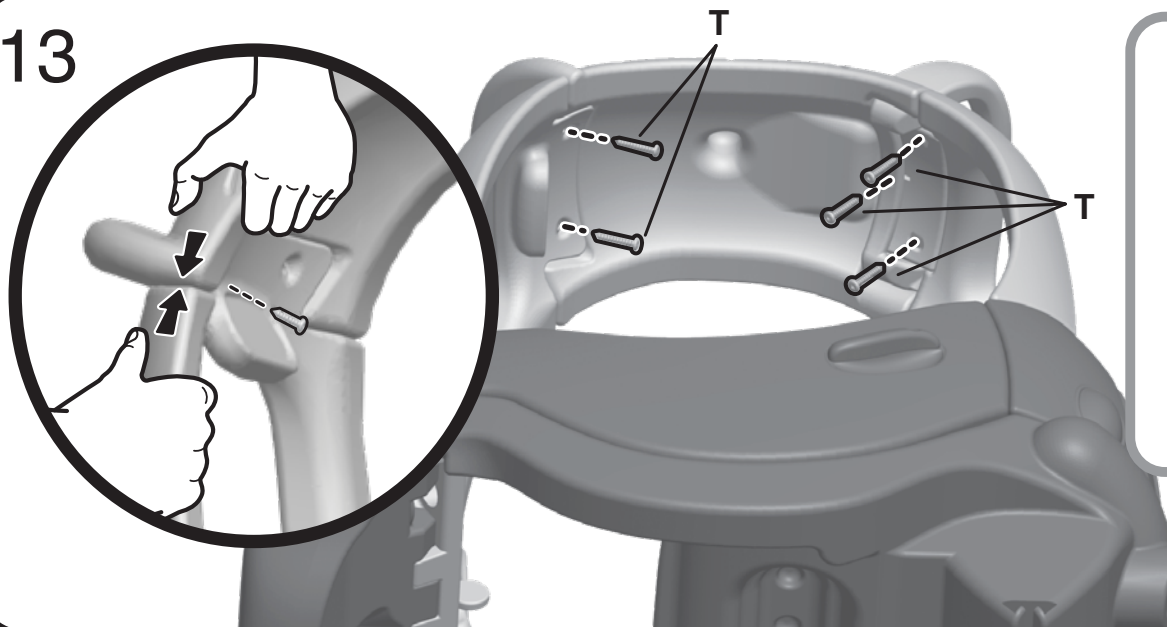
11



12



13



x 5

